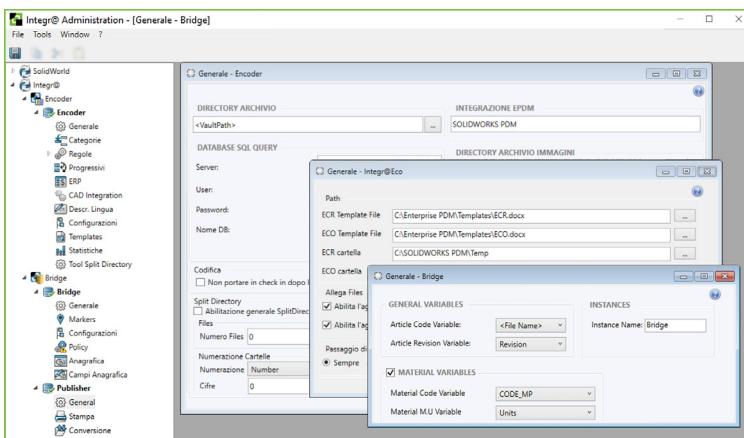


Admin

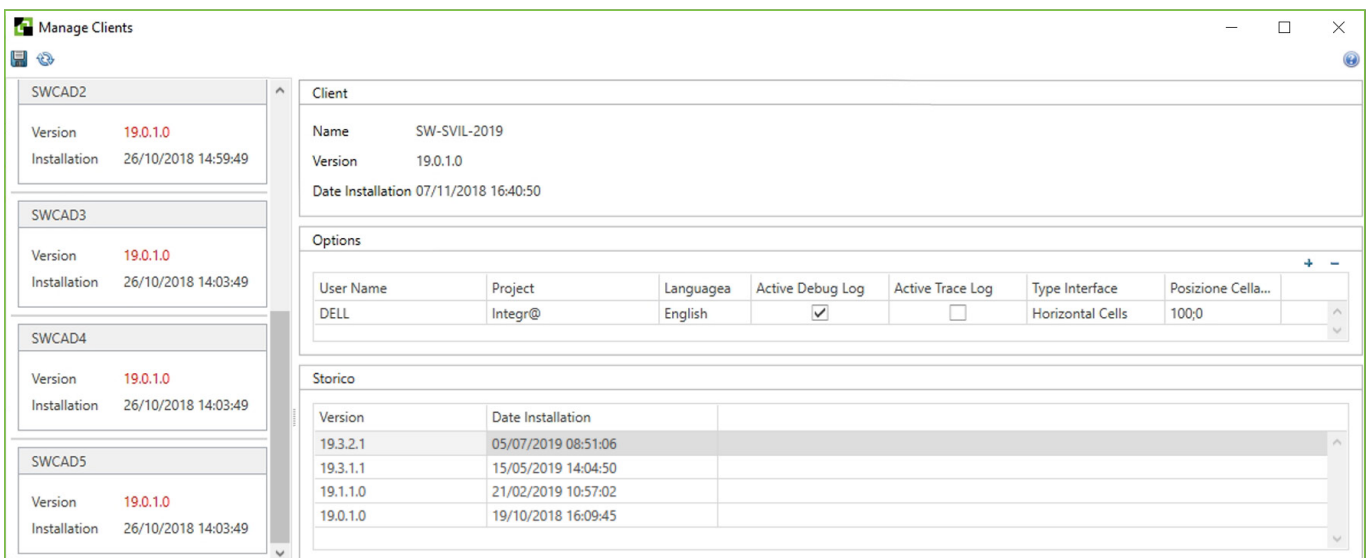
The Integr@ Admin module is the centralized administrator to manage all module parameters.



FUNCTIONS

- **Add, modify and control** all the Integr@ modules functionality
- **Manage individual module licenses** allowing simple assignment to client workstations according to business needs

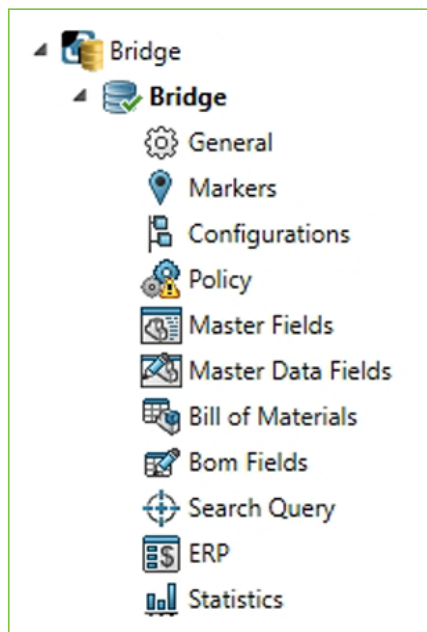
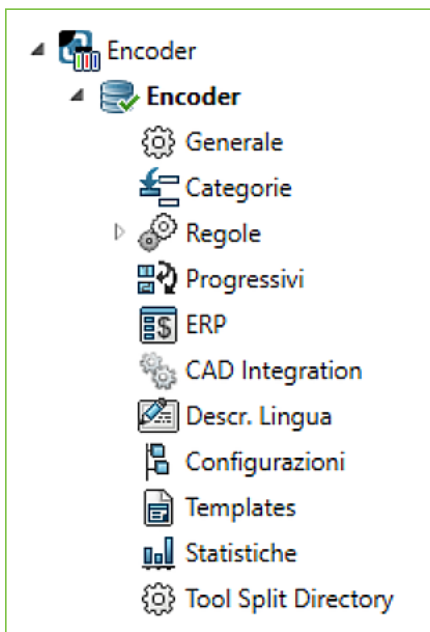
INTERFACE



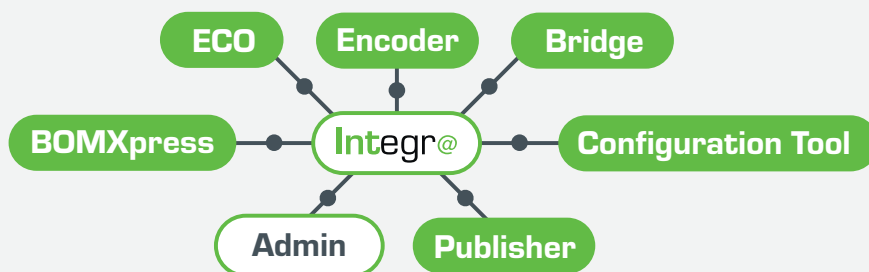
The management of each Integr@ module is with a **dedicated graphical environment similar to SOLIDWORKS PDM Professional environment**. A very simple interface facilitates non-expert users who have a very low familiarity with mechanical design.

MAIN FEATURES

- EPDM **graphic style**
- Integr@ module databases **distributed management**
- **Multi database management** for data exchange by other systems
- **Multi-coding** database management
- Version **online check**
- EPDM **Addin loading management**
- **Licenses centralized management** for various client assignment
- **User permission management** linked to individual modules functionality
- Statistical **reports**
- **Installation set-up** for the entire Suite compatible with Windows systems



Admin module is part of Integr@ suite



www.integra3Dconnect.it

Solid World S.r.l.

Registered Office
Via Enrico Reginato, 87 | 31100 | Treviso | Italy
Phone: +39 0422 1990911 | Fax: +39 0422 436777
Administrative Offices
Via Monari Sardè 2/2 | 40010 | Bentivoglio | Italy
Phone: +39 051 0952911 | Fax: +39 051 725462

www.solidworld.it - info@solidworld.it

Group offices:

ANCONA • BARI • BENEVENTO • BOLOGNA • BRESCIA
FIRENZE • GENOVA • LATINAREGGIO EMILIA - MODENA
MILANO • TORINO • TRENTO • TREVISO • VERONA
LUBIANA, SLOVENIA • SARAJEVO, BOSNIA ERZEGOVINA
ZAGABRIA, CROAZIA

www.the3dgroup.it - info@the3dgroup.it

