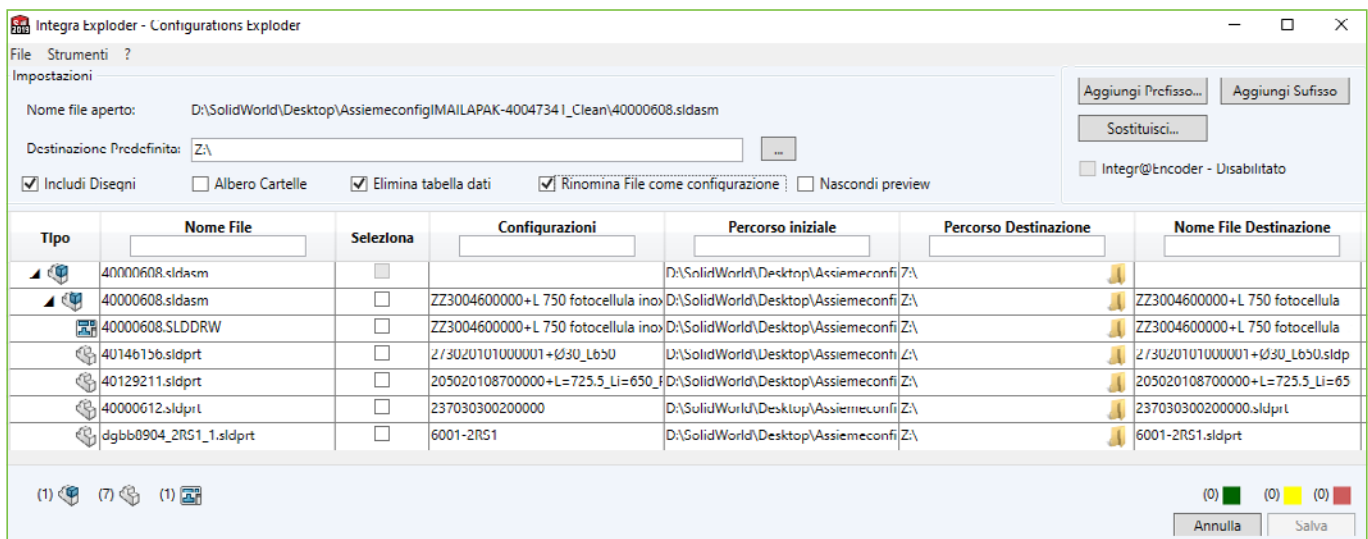


# Configuration Tool

**Configuration Tool is the Integr@ module  
for the explosion of assemblies  
or parts configured in assemblies or single parts**

The configuration tool is a software module that, complying to given criteria, enables you to **define a product's combination of components, features or functions.**



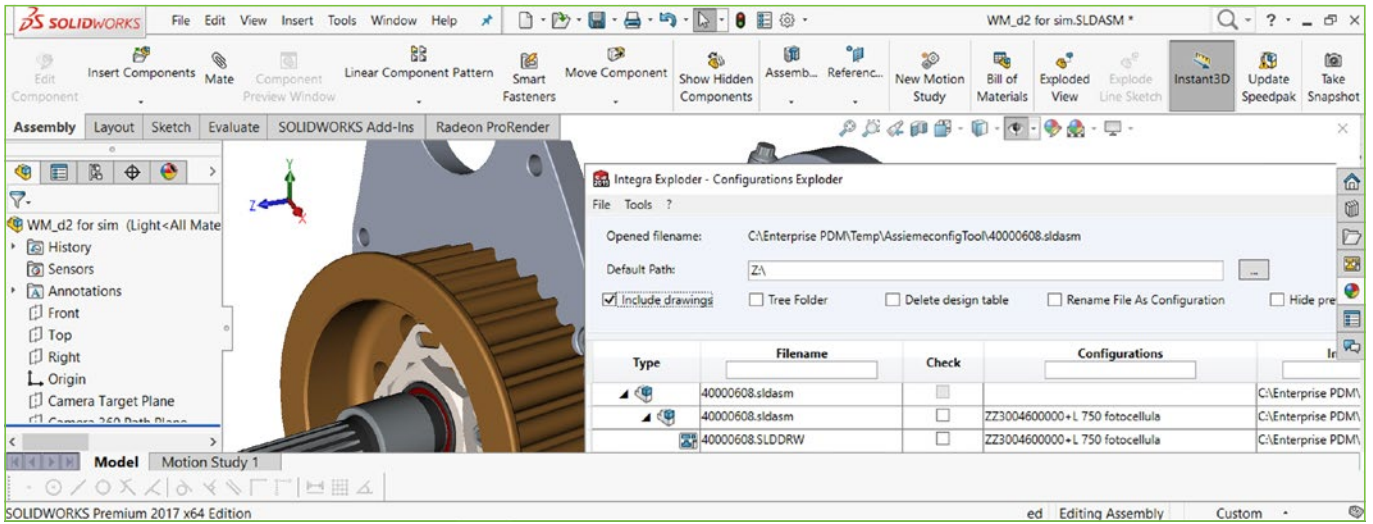
## FUNCTIONS

Configuration Tool can **transfer configuration informations to PDM system** managing in timely manner many variants and their versions / revisions coding, obtaining:

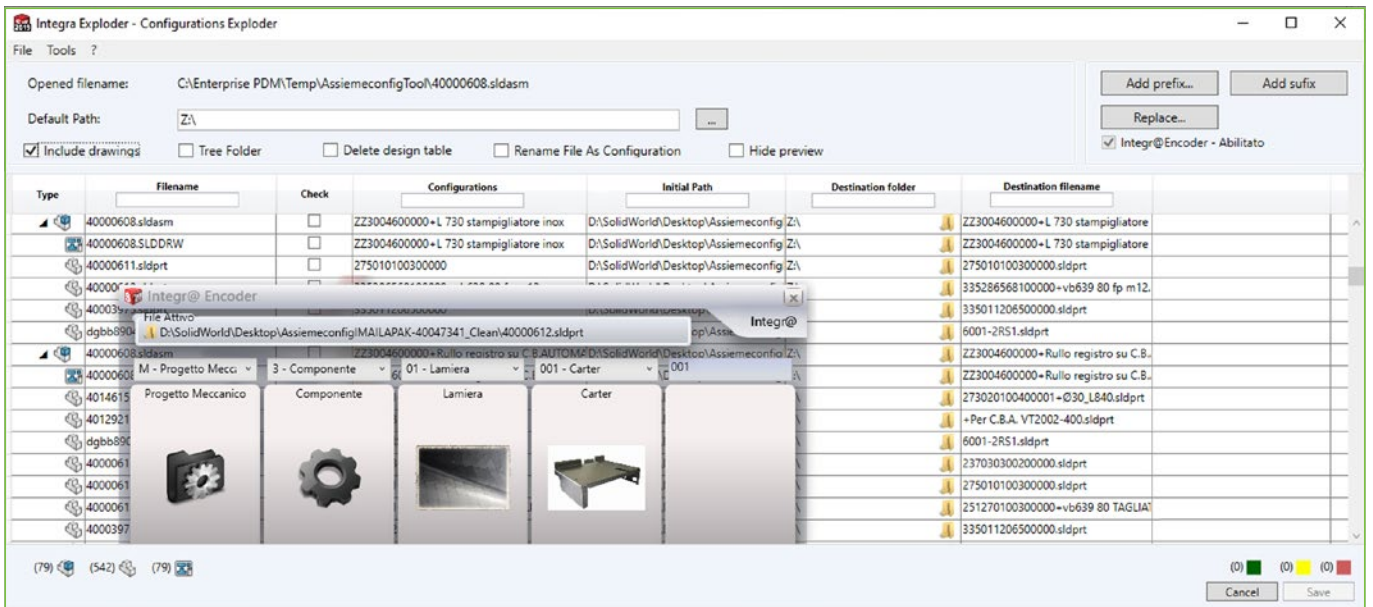
- **creating file for each configuration** starting with components explosion keeping link to relational technical table
- **assemblies / components coding creating by Encoder's functionality integration** and therefore controlled files storage in correct PDM folders and their entry in workflow assigned

Powerful function and rules filtering allow components **smart section to be exploded and of the drawings to be reconnected / generated.**

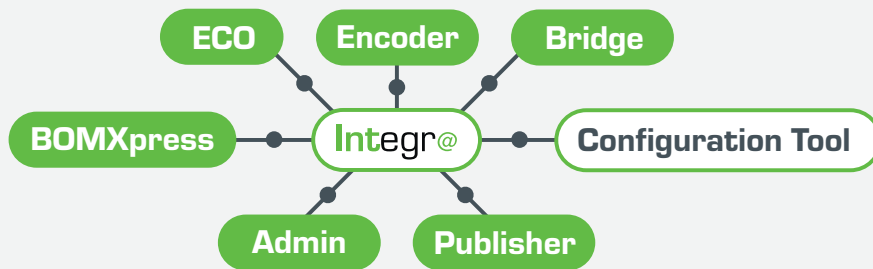
## CONFIGURATION TOOL LAUNCHES DIRECTLY FROM SOLIDWORKS



## INTEGRATION BETWEEN CONFIGURATION TOOL AND ENCODER



## Configuration Tool module is part of Integr@ suite



[www.integra3dconnect.it](http://www.integra3dconnect.it)

### Solid World S.r.l.

Registered Office  
Via Enrico Reginato, 87 | 31100 | Treviso | Italy  
Phone: +39 0422 1990911 | Fax: +39 0422 436777  
Administrative Offices  
Via Monari Sardè 2/2 | 40010 | Bentivoglio | Italy  
Phone: +39 051 0952911 | Fax: +39 051 725462

[www.solidworld.it](http://www.solidworld.it) - [info@solidworld.it](mailto:info@solidworld.it)

### Group offices:

ANCONA • BARI • BENEVENTO • BOLOGNA • BRESCIA  
FIRENZE • GENOVA • LATINAREGGIO EMILIA - MODENA  
MILANO • TORINO • TRENTO • TREVISO • VERONA  
LUBIANA, SLOVENIA • SARAJEVO, BOSNIA ERZEGOVINA  
ZAGABRIA, CROAZIA

[www.the3dgroup.it](http://www.the3dgroup.it) - [info@the3dgroup.it](mailto:info@the3dgroup.it)

