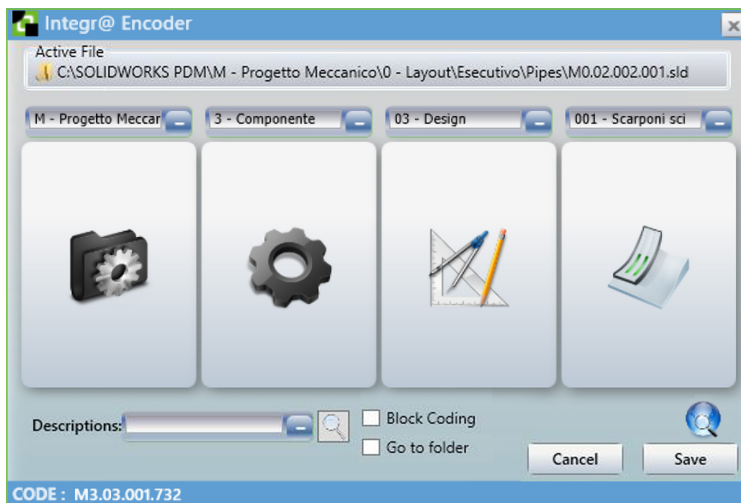


Encoder

Encoder is the Integr @ module that encodes, categorizes and organizes documents and drawings with company rules

A powerful rule-based engine and categorizing system enables the company to **quickly manage the classification and storage of any kind of documents** and improve the standards of your work.



FUNCTIONS

- **Quickly component search** without wasting time
- **Design without redoing** what you have already done
- **Reduce** design costs
- **Manage** item code

Encoder works with **SOLIDWORKS**, **PDM Professional** or **Microsoft Windows** to provide an effective "housekeeper" for the creation of CAD parts or new documents. It supports the following functions:

WITH SOLIDWORKS

- **Activation** as add-in
- **Activable menu** from command bar
- File properties **writing / reading**

WITH PDM Professional

- **Activation** as add-in
- **New codes and related documents storage** directly in the PDM vault
- Usage of PDM's **progressives**
- **Writing / reading** fields in DB
- **Personal data automatic activation** to properties compilation

WITH MICROSOFT WINDOWS

- **Activation via contextual menu** (third mouse button)
- **Writing / reading** file properties

INTERFACE

You can customize Integr@ Encoder user interface adapting it to the purposes and make it easier to use:

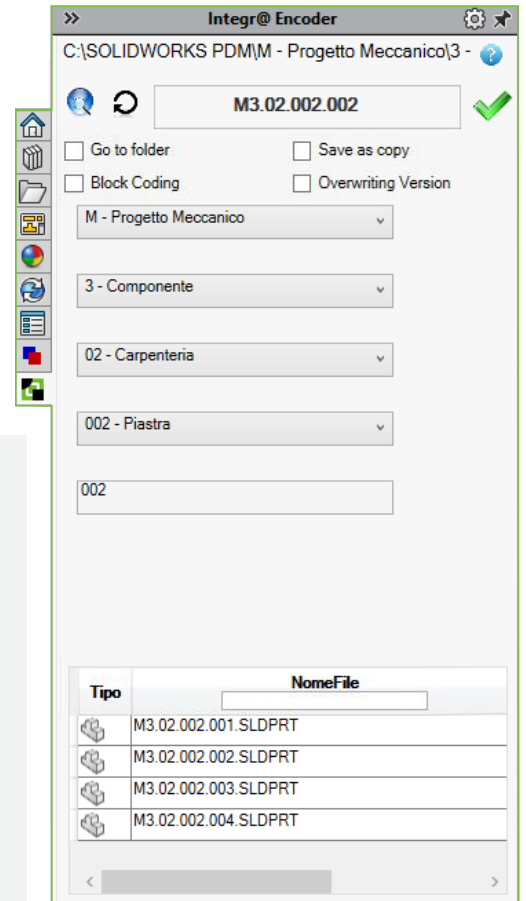
- **Description association** to the coding fields
- **Representative image association** to the coding class
- **Change the look** of the classification menu

MANAGE ITEM CODE

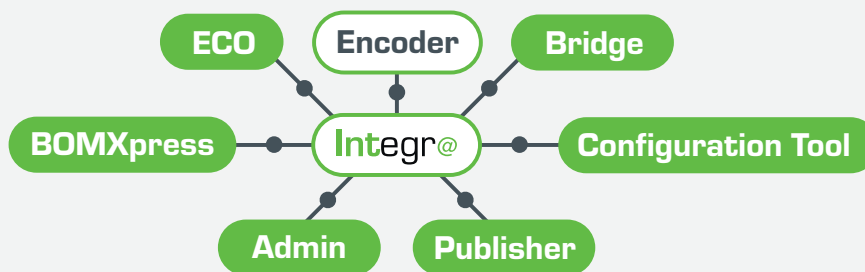
- **Code unique verification** (file system or PDM search)
- Item code or document **instant search** related to coding rule
- **Quick decisions** about the opportunity to create new item codes

FUNCTIONS FOR CREATING CORPORATE CODE

- **Codes creation** according to the corporate coding rules
- **Automatic conversion** according to company coding rules
- **Automatic conversion** from CAD to ERP code
- Various format **date management**
- **Coding data acquisition** through external DB queries
- Multilingual description **automatic compilation**
- **Progressive number management** related to classification
- CAD and Office file properties **automatic compilation**
- **Each component classification** related to belonging family
- **Automatic files archiving** in folder based on classification



Encoder module is part of Integr@ suite



www.integra3dconnect.it

Solid World S.r.l.

Registered Office
Via Enrico Reginato, 87 | 31100 | Treviso | Italy
Phone: +39 0422 1990911 | Fax: +39 0422 436777
Administrative Offices
Via Monari Sardè 2/2 | 40010 | Bentivoglio | Italy
Phone: +39 051 0952911 | Fax: +39 051 725462

www.solidworld.it - info@solidworld.it

Group offices:

ANCONA • BARI • BENEVENTO • BOLOGNA • BRESCIA
FIRENZE • GENOVA • LATINAREGGIO EMILIA - MODENA
MILANO • TORINO • TRENTO • TREVISO • VERONA
LUBIANA, SLOVENIA • SARAJEVO, BOSNIA ERZEGOVINA
ZAGABRIA, CROAZIA

www.the3dgroup.it - info@the3dgroup.it

