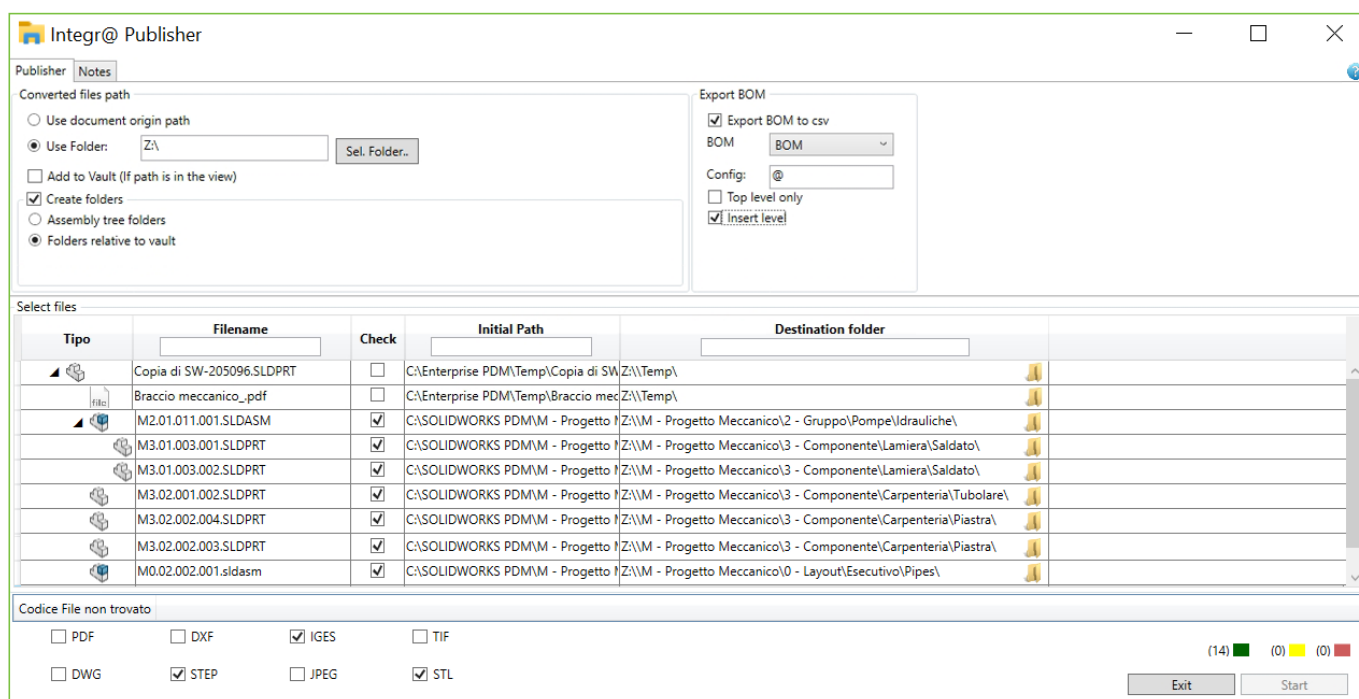


Publisher

The Integr@ Publisher module is dedicated to print and convert documents and data stored in Solidworks Pdm Professional vaults



FUNCTIONS

Integr@ Publisher **allows documents and data present printing and massive conversion in the PDM**, relieving the technical office of burdensome and repetitive tasks.

- **CAD files automatic conversion in various formats** (pdf, dxf, ...) simultaneously storing the generated files in the appropriate in PDM's folders
- **File automatic printing operations contained in the PDM archive** by addressing files according to the format and / or area of competence on the appropriate printers
- **Enhance datacard variables** of generated files
- **Automatically and dynamically** fill notes on technical tables
- **Write watermarks** on printed / converted documents

BOM PUBLICATION

PDM or ERP lists can be published in **Excel, Pdf or printing device format**. Items for which BOM is desired can be identified by:

- SOLIDWORKS PDM Professional **searching or browsing**
- **Code list acquisition from ERP system**. The print layout model is configurable according to business needs

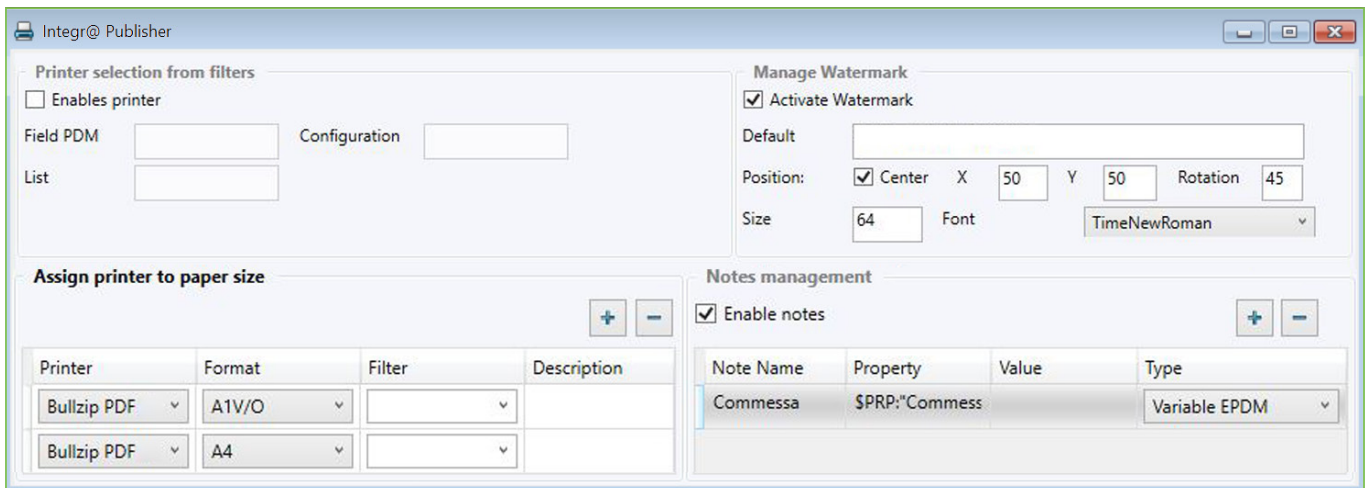
DRAWS PRINTING

You can allow to set **an output device for each sheet format** (A0, A1, etc). The print format can be read directly from the file or determined by the operator (for example to resize all prints in A4).

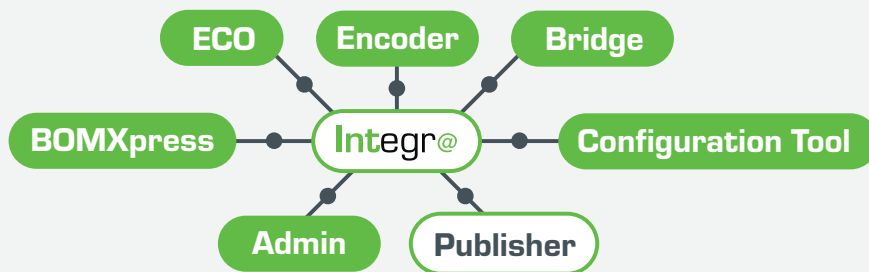
- **Print options are set in system level**, but can be changed in the individual run
- **A function for addressing long lists of files** to a print server is available
- **Execution via SOLIDWORKS or eDrawings** for printing drawings in Dwg or Dxf format

EXPORT

Drawings can be exported in PDF, DWG, DXF or STEP formats. Files can be saved in the source directory or in a network folder.



Publisher module is part of Integr@ suite



www.integra3Dconnect.it

Solid World S.r.l.

Registered Office
Via Enrico Reginato, 87 | 31100 | Treviso | Italy
Phone: +39 0422 1990911 | Fax: +39 0422 436777
Administrative Offices
Via Monari Sardè 2/2 | 40010 | Bentivoglio | Italy
Phone: +39 051 0952911 | Fax: +39 051 725462

www.solidworld.it - info@solidworld.it

Group offices:

ANCONA • BARI • BENEVENTO • BOLOGNA • BRESCIA
FIRENZE • GENOVA • LATINAREGGIO EMILIA - MODENA
MILANO • TORINO • TRENTO • TREVISO • VERONA
LUBIANA, SLOVENIA • SARAJEVO, BOSNIA ERZEGOVINA
ZAGABRIA, CROAZIA

www.the3dgroup.it - info@the3dgroup.it

