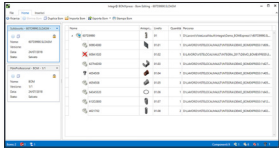


WHAT'S NEW - INTEGR@ 2019



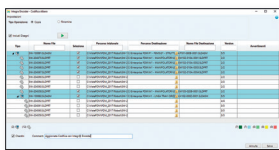
1 INTEGR@ BOMXPRESS

Integr @ BOMXpress is an application that allows you to edit the BOM of a SOLIDWORKS file, both CAD and PDM, in order to create customized versions and then export and save them in Excel format.

- Modify the Bom CAD and PDM of the file with **BomEditing**.
- Verify CAD references properties of SOLIDWORKS files and update them in case of error with **Update References**.

NEW

- You can set a custom Template for the Excel export procedure.
- Has been optimized the procedure for references updating.
- The "Quantity" field can be changed directly from the table.



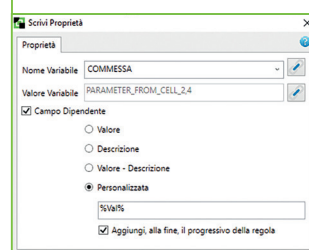
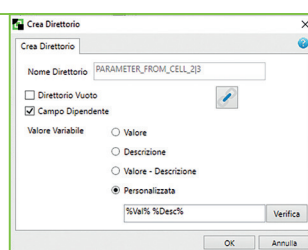
2 INTEGR@ ENCODER

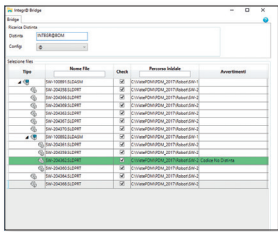
A powerful rule-based engine and categorizing system enables the company to quickly manage the classification and storage of any kind of documents and improve the standards of your work.

- Creazione categoria articolo
- Creazione codice parlante tramite regole
- Archiviazione file basata sulle categorie
- Scrittura automatica delle proprietà file
- Codifica albero
- Decodifica documenti
- Filtri toolbox

NEW

- **Exclude folder or projects from structure coding**
You can define a PDM folder or projects list to be excluded from encoding.
- **Version coding overwriting management**
You can overwrite the current file version during encoding, avoiding to generate a new version.
- **Tool Split Directory**
Function that allows you to set maximum file number for each folder and, when reached, if by Encoder is added a new file, it divides folder into subfolders that respect the limit.
- **New "Custom" mode to create folders name during encoding**
You can customize the folder name during encoding.
- **New "Custom" mode for encoded file properties enhancing**
You can customize encoded file properties value.



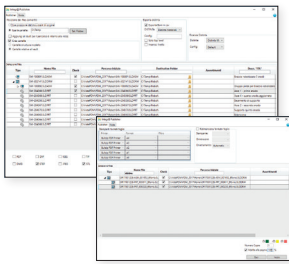


3 INTEGR@ BRIDGE

The Integr@ Bridge module allows exchange data between SOLIDWORKS PDM Professional and the ERP. It's not only a matter of data exchange, it gives you the ability of dynamically verify data integrity and enhance your company's contents.

NEW

- **BOM (Bill of Materials) import from Excel**
You can import a BOM in PDM by loading it from an Excel file.
- **Automatic export from multiple workflow states**
You can export, automatically and manually, from multiple states or transactions.
- **Ability to export data of the "father" component**
The separate export now allows to find properties also from the "father" component.
- **BOM import with 3D model creation or updating**
You can import the BOM from ERP systems by recreating the 3D assembly.

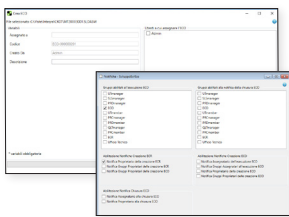


4 INTEGR@ PUBLISHER

The Integr@ Publisher module is dedicated to print and convert documents and data stored in SOLIDWORKS Pdm Professional vaults.

NEW

- **Sheets management while printing**
Single draw of a multi-sheet drawing can be individually printed.
- **Improved performance during loading**
BOM's decrease loading time.

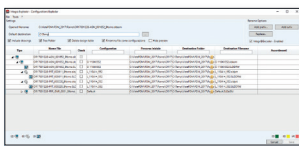


5 INTEGR@ ECO

Engineering Change Request/Order/Notice is the Integr@ module that allows to check and historicize requests and change orders. Integrated in SOLIDWORKS PDM Professional, it's customizable and configurable according with company policies.

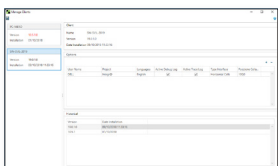
NEW

- **Notification possibility added while ECO operations**
You can customize ECO notifications sending during creation or closure to the file creator and / or to the enabled groups.



6 INTEGR@ CONFIGURATION TOOL

The configuration tool is a software module that, complying to given criteria, enables you to define a product's combination of components, features or functions.



7 INTEGR@ ADMIN

The Integr@ Admin module is the centralized administrator to manage all module parameters.

NEW

- **Local setting centralized management**
Local client information will be saved in a centralized database.
- **License request procedure optimized**
You can request license for more than one module at the same time.

Solid World S.r.l.

BOLOGNA Registered and Administrative Office
Via C. Monari Sardè 2/2 - 40010 Bentivoglio (BO)
Tel. 051 0952911 - Fax 051 725462

Group offices:

ANCONA • BARI • BENEVENTO • BOLOGNA • BRESCIA • FIRENZE
GENOVA • LATINA • MILANO • REGGIO EMILIA - MODENA
TORINO • TRENTO • TREVISO • VERONA
LUBIANA, SLOVENIA • SARAJEVO, BOSNIA ERZEGOVINA • ZAGABRIA, CROAZIA



www.solidworld.it • info@solidworld.it www.the3dgroup.it • info@the3dgroup.it

This publication is indicative. The informations contained in this document are subjected to change by SolidWorld, without obligation notice of any kind. All trademarks and registered trademarks mentioned are property of their respective companies.

Edition June 2018